

# POWER STATION

OEM / ODM / Free Design Provided

# SALE



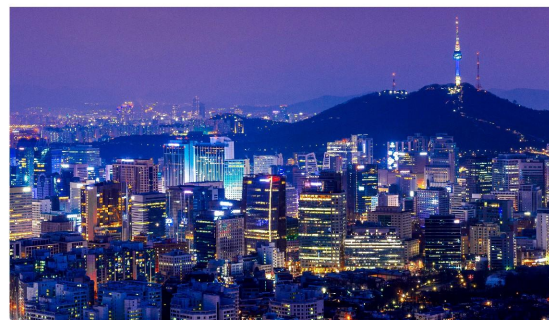




## CHAPTER 1

COMPANY  
INTRODUCTION

\ 01



## CHAPTER 2

ENTERPRISE  
CULTURE

\ 02



## CHAPTER 3

COMPANY  
QUALIFICATION

\ 03



## CHAPTER 4

R&D AND  
MANUFACTURING

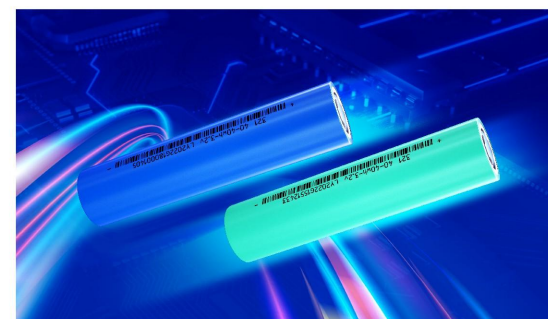
\ 05



## CHAPTER 5

PORTABLE  
ENERGY STORAGE

\ 06



## CHAPTER 6

LITHIUM  
LIFEPO4 BATTERY

\ 33





## ABOUT LYRASOM

### Huizhou Liyuan New Energy Co.,Ltd

(Lyrasom) is a leading global energy storage solution and service provider. It is a high and new tech enterprise integrating R & D, production, sales, and technical services.

Based on advanced lithium battery application technology, the company jointly develops independent core technology products of the enterprise relying on partners such as Nanjing University, the doctor workstation of Central South University, and the base of Central South University. At present, the products are exported to more than 70 countries in the world such as the United States, Germany, Italy, and Japan, mainly including lifepo4/lithium batteries, household energy storage systems, industrial and commercial energy storage systems, portable power station, communications, electric tools, two or three-wheeled vehicles, and other environmentally friendly and intelligent lithium battery packs. Since its establishment, the company has been adhering to the "Three Good" service tenet of "good technology, good manufacturing, and good service". With its perfect technology R & D center and specialty and efficient quality monitoring system, it has become a trusted partner of many high-quality enterprises in the world.

In 2020, our company invested and established a cell factory in Yanting, Sichuan, covering an area of 245 mu, a plant area of 34000 m<sup>2</sup>, and an annual output of 4Gwh lithium-ion batteries. It is mainly applied to the production of environmentally friendly and efficient lithium-ion batteries for household energy storage, base station energy storage, solar energy storage, low-speed vehicles, and so on.

In the face of the ever-changing personalized, diversified, and international needs of global customers, our company will continue to improve the industrial layout, make every effort to create leading power batteries and power supplies in the new energy segment, and provide customers with all-round customized solutions and products, drive development with innovation, and work with global customers and partners hand in hand to carry forward our dreams.



WITH DREAMS  
TO CREATE BRILLIANT!

## ENTERPRISE CULTURE

### MISSION—WE ARE OMNIPOTENT

We aim to provide Safe & green power solutions and products for global clients.

01



02

### VISION—WE WANT TO AN INDUSTRIAL PIONEER AND PRODUCE HIGH-QUALITY PRODUCTS.

We always indulge in developing and manufacturing batteries and providing services of batteries, and creating the customized highland of the full industrial chain for the global lithium battery system.

### VALUE—WE ARE LOYAL TO CLIENTS AND INSIST ON QUALITY FIRST

Upholding the business philosophy of "people first and pursuit of excellence" and insisting on the value norms of "being kind to clients", we advocate the performance-oriented innovation, cooperative and high-efficient entrepreneurship, establish "co-construction and co-sharing" value distribution criteria, and pay back society with high sense of responsibility.

03





# COMPANY QUALIFICATION



CE\UN38.3\MSDS\BIS\UL1973(Cell)\CB(cell)



# COMPANY PATENT CERTIFICATE

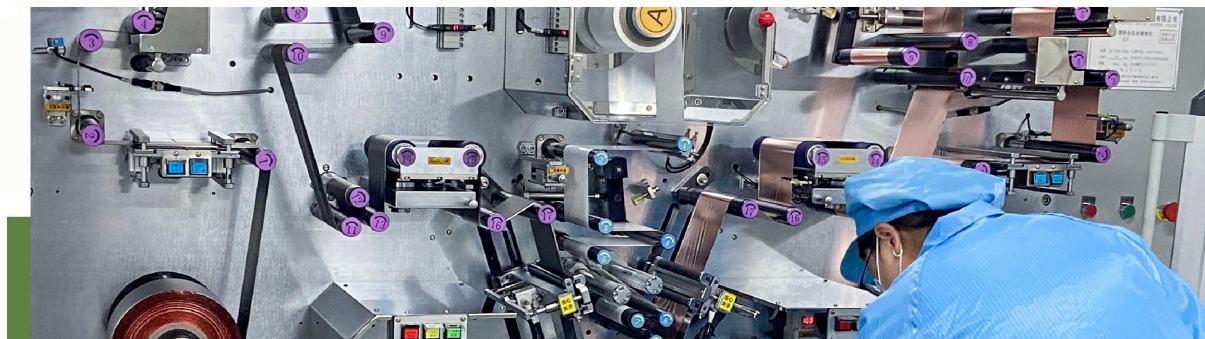
Company Honor: School-enterprise Cooperation Enterprise of Central South University/Doctoral Workstation of Central South University/Cooperative Unit of "Production, Education and Research" of Central South University

Manufactured many invention patents for lithium batteries and energy storage systems





# PRODUCT R&D STRENGTH



## I TESTING & PRODUCTION DEPT



## I MANUFACTURING SYSTEM



## I R&D AND MANUFACTURING





# PORTABLE POWER STATION

OEM/ODM ACCEPT ACCORDING  
CUSTOMERS REQUIREMENTS

06-22  
Portable Power Station

23-26  
LiFePO4 Battery Pack

27-28  
LiFePO4 Cell

29-30  
Portable Folding  
Solar Panel





# BALCONY SOLAR ESS





### Product Parameter

Model	LY2500A/ LY3000A	LY2500A/ LY3000A*2	LY2500A/ LY3000A*3	LY2500A/ LY3000A*4	LY2500A/ LY3000A*5	LY2500A/ LY3000A*6
Rated Energy	3.1KWh	6.2KWh	9.3KWh	12.4KWh	15.5KWh	18.6KWh
Battery Type	LMFP					
Cycle Life	3000 times (80% left after 3000 times)					
AC Output	EU Standard 220V/15A					
AC ChargingTime	2.5 hours	3.8 hours	5.6 hours	7.5 hours	9.4 hours	11.3 hours
DC ChargingPower	Maximum supports 1400W, supports changing by solar charging (with MPPT, weak light can be charged). car charging, wind charging					
DC ChargingTime	2.8 hours	4.7 hours	7 hours	9.3 hours	11.7 hours	14 hours
DC ChargingTime	2 hours	3.4 hours	4.8 hours	6.2 hours	7.6 hours	8.6 hours
Car ChargerOutput	12.6V10A. Supports for inflatable pumps					
AC Output	4*120V/20A.2400W/ peak value5000W					
USB-A Output	5V/2.4A	5V/2.4A	5V/2.4A	5V/2.4A	5V/2.4A	5V/2.4A
QC3.0	2*QC3.0	3*QC3.0	4*QC3.0	5*QC3.0	6*QC3.0	7*QC3.0
USB-C Output	3PD100W	4PD100W	5PD100W	6*PD100W	7*PD100W	8*PD100W
UPS Function	With UPS function, switching time less than 20mS					
LED Lighting	1*3W	23W	3*3W	43W	5*3W	63W
Weight(Host/Capacity)	9kg /29kg	9kg /29kg *2	9kg /29kg *3	9kg /29kg *4	9kg /29kg *5	9kg /29kg *6
Dimensions(LWHmm)	448*285*463	448*285*687	448*285*938	448*285*1189	448*285*1440	448*285*1691
Certification	RoHS,SDS,FCC,UL1642,CES,NRCAN,UN38.3,CP65,CEC,DOE,IEC62133,TSCA IEC62368,UL2743,UL1973					
OperatingTemperature	-20~40°C					
Cooling	Natural air cooling					
Operating Altitude	≤3000m					

### Features

This product is a split energy storage system, including the inverter main unit and battery capacity pack (the battery capacity pack supports expansion).

The system includes 1 AC inverter board, 1 DC main control board, 1 battery protection board, 1 PV board, 1 3100Wh battery pack, 2 DC inputs, 2 QC3.0 outputs, 2 Type C outputs, 1 car charger output and 4 AC outputs



Plug and play



Supports dim-light charging



Portable power station of the family



Simultaneous charging & discharging



Supports fast-charging by gridpower



Expandable to up to 6 units





# Trolley ESS



## Features

With an all-in-one design that includes a bi-directional inverter and MPPT system, it is very easy to transport.



It can be connected to battery power, photovoltaic power and grid to supply it with power, and can store the energy produced by photovoltaic solar energy. When there is a power outage or a high demand for electricity, the energy stored in the system can meet the energy demand and provide uninterrupted power support.

The product can help you realize energy independence.



3 ways of charging: AC/USB/Car Port, perfect for outdoor use



Supports Android and iOS system Bluetooth function



Modular design to meet the needs of home energy applications



Supports parallel connection of 1~16 battery systems

Model	LY-4800YA1	LY-4800YAA
Battery Input		
Type	LFP	
Rated Voltage	48V	
Input Voltage Range	37-60V	
Rated Energy	37-60V	4800Wh
Rated Charging Current	25A	25A
Rated Discharging Current	45A	45A
Maximum discharge current	80A	80A
Battery Cycle Life	2000 times (@25°C, 1C discharge)	
AC Input		
Charging Power	1200W	1800W
Rated Voltage	110Vac	220Vac
Input Voltage Range	90-140V	180-260V
Frequency	60Hz	50Hz
Frequency Range	55-65Hz	45-55Hz
Power Factor (@max. charging power)	>0.99	>0.99
DC Input		
Maximum Input Power from VehicleCharging	120W	
Maximum Input Power from Solar Charging	500W	
DC Input Voltage Range	10-53V	
DC/Solar Maximum Input Current	10A	
AC Output		
Rated AC Output Power	2000W	
Peak Power	5000W	
Rated Voltage	110Vac	220Vac
Rated Frequency	60Hz	50Hz
Maximum AC Current	28A	14A
Rated Output Current	18A	9A
Harmonic Ratio	<1.5%	

Model	LY-4800YA1	LY-4800YAA
DC Output		
USB-A(x1)	12.5w, 5V, 2.5A	
QC 3.0(x2)	Each 28w, (5V, 9V, 12V), 2.4A	
USB-TypeC(x2)	Each 100w, (5V, 9V, 12V, 20V), 5A	
Cigarette Lighter and DC Port Maximum Output Power	120W	
Cigarette Lighter(x1)	120w, 12V, 10A	
DC Port (x2)	120w, 12V, 10A	
Other Function		
LED Light	3W	
Dimensions of LCD Display (mm)	97*48	
Wireless Charging	10W (Optional)	
Efficiency		
Maximum Battery to AC	92.0%	93.0%
Maximum AC to Battery	93%	
Protection	AC Output Overcurrent, AC Output Short Circuit, AC Charge Overcurrent, AC Output Over/Under Voltage, AC Output Over/Under Frequency, Inverter Over Temperature, AC Charge Over/Under Voltage, Battery Temperature High/Low, Battery Under Voltage	
General Parameter		
Dimensions(L*W*Hmm)	570*220*618	
Weight	54.5kg	
Operating Temperature	0~45℃(Charging), -20~60℃ (Discharging)	
Communication Interface	WIFI	



# 300W Power Station

300W Portable Power Station 14.4V/20Ah (288Wh)

Ready



Model: MO-PH003

DC-IN input power: 12V-24V/8.3A-4.2A, 100W Max

USB-C1 Input Power:

5V-3A/9V-3A/12V-3A/15V-3A/20V-5A.PD 100W Max

Anderson Input Power: MPPT 16V-24V/7.5A-5A, 120W Max

AC socket output power:

AC 100-120V~60Hz 300W Rated, 450W Max (US, Japan)

AC 220-240V~50Hz 300W Rated, 450W Max (Europe, UK)

Car charger cigarette Output power: 12V-10A, 120W Max

USB-C1/C2 output power:

5V-3A/9V-3A/12V-3A/15V-3A/20V-5A.PD 100W

USB-A1/A2 interface output power: 5V-3A/9V-2A/12V-1.5A. 18W

DC1/DC2 output interface (5521 Port) Output power: 12V-10A, 120W Max

LED lighting: 1pc 5W

Battery: NCM ternary lithium battery 4S8P18650 /2500mAh

Certification: CE ROHS FCC UKCA TUV MSDS UN38.3

Size: 240\*156\*150 mm

Weight: 3.7kg



# 600W Power Station

600W Portable Power Station 21.6V/22.5Ah (486Wh)

Ready

Model: PS600

DC-IN input power: 12-24V=8.3A-4.2A 100W Max

USB-C1 port PD3.1 input:

5V=3A.9V=3A.12V=3A.15V=3A.20V=5A.28V=5A (140W Max)

Anderson Input Power MPPT 16V-24V = 7.5A-5A 120W Max

AC socket output power:

AC 100-120V~60Hz 600W Rated, 750W Max (US, Japan)

AC 220-240V~50Hz 600W Rated, 750W Max(Europe, UK)

Car charger cigarette Output power: 12V-10A, 120W Max

USB-C1/C2 output power:

5V=3A/9=3A/12=3A/15=3A/20V=5A/28V=5A, PD3.1 140W Max

USB-A1/A2 output power: 5V-3A/9V-2A/12V-1.5A. 18W

DC1/DC2 (5525 Port) output power: 12V-10A, 120W Max

LED light: 1pc 5W

Batteries: NCM ternary lithium 6S9P, 54 18650/2500mAh

Certification: TUV/PSE/FCC/CE/CCC/UKCA MSDS UN38.3

Dimensions: 286.2 x 191.86 x 185 mm

Weight: 6.2 KG



# PORTABLE POWER STATION 300W/252Wh

Model: **LYM3**



LYRASOM



## Specification

Capacity	252Wh(14.4V, 17.5Ah)
Li-ion NCM, 76500mAh@3.6V	
Pure Sine Wave Output 300W Continuous, 600W Surge Max	
AC Output	110V/220V 50Hz/60Hz
Operating Temp	-10°C-40°C
Charging Temp	0°C-40°C
Weight	3.3KG
Size	220*170*210mm
<b>INPUT</b>	
DCInput	15V/4A, 60W max
Car Charge	12V/5A, 60W max
Solar Charge	12-24V, 60W max
<b>OUTPUT</b>	
2*DC Pot	12V/8A, 100W max
1*Car Port	12V/8.3A, 100W max
Wireless Charge Port	NO
2*USB-A	5V/2.4A*1, 18W*1 (QC 3.0)
1*USB-C(PD)	30W



TV(100W)  
=2.26 hours



Laptop(50Wh)  
=4 recharges



Tablet(30Wh)  
=7 recharges



LED light(5W)  
=45.3 hours



Mini Fridge(60W)  
=3.7 hours



Phone(12Wh)  
=18 recharges

Our portable solar panel offers high solar output, conversion efficiency rating, and a convenient folding design so it's ready to grab and go at anytime.



Charge with a portable power source for outdoor activities such as picnics



Charge your portable power supply or battery and be prepared for disasters



During an RV trip

# PORTABLE POWER STATION 600W/568Wh

Model: **LYM5**





## Specification

Capacity	568Wh(21.6V, 25Ah)
Li-ion NCM, 153600mAh@3.6V	
Pure Sine Wave Output 600W Continuous, 1200W Surge Max	
AC Output	100V/110V/220V 50Hz/60Hz to 650+10W
Operating Temp	-10°C-40°C
Charging Temp	0°C-40°C
Weight	5.0KG
Size	275*170*215mm
<b>INPUT</b>	
DC Input	20V/5A, 100W max
Car Charge	12V/5A, 60W max
Solar Charge	12-24V, 60W max
<b>OUTPUT</b>	
2*DC Pot	12V/8A, 100W max
1*Car Port	12V/8.3A, 100W max
Wireless Charge Port	NO
2*USB-A	5V/2.4A*1, 18W*1 (QC 3.0)
1*USB-C(PD)	65W



TV(100W)  
=5.1 hours



Laptop(50Wh)  
=10 recharges



LED light(5W)  
=102 hours



Phone(12Wh)  
=42 recharges

Our portable solar panel offers high solar output, conversion efficiency rating, and a convenient folding design so it's ready to grab and go at anytime.



Charge with a portable power source for outdoor activities such as picnics

Charge your portable power supply or battery and be prepared for disasters



During an RV trip



# PORTABLE POWER STATION 600W/568Wh

Model: LYM6





## Specification

Capacity	568Wh(21.6V, 25Ah)
Li-ion NCM, 153600mAh@3.6V	
Pure Sine Wave Output 600W Continuous, 1200W Surge Max	
AC Output	110V/220V 50Hz/60Hz
Operating Temp	-10°C-40°C
Charging Temp	0°C-40°C
Weight	5.0KG
Size	275*170*215mm
<b>INPUT</b>	
DCInput	20V/5A, 100W max
Car Charge	12V/5A, 60W max
Solar Charge	12-24V, 60W max
<b>OUTPUT</b>	
2*DC Pot	12V/8A, 100W max
1*Car Port	12V/8.3A, 100W max
Wireless Charge Port	YES
2*USB-A	5V/2.4A*1, 18W*1 (QC 3.0)
1*USB-C(PD)	65W



TV(100W)  
=5.1 hours



Laptop(50Wh)  
=10 recharges



Tablet(30Wh)  
=17 recharges



LED light(5W)  
=102 hours



Mini Fridge(60W)  
=8.5 hours



Phone(12Wh)  
=42recharges

Our portable solar panel offers high solar output, conversion efficiency rating, and a convenient folding design so it's ready to grab and go at anytime.



Charge with a portable power source for outdoor activities such as picnics

Charge your portable power supply or battery and be prepared for disasters



During an RV trip

# PORTABLE POWER STATION 2000W&2500W/2160Wh

Model: LYD5





## Specification

Capacity	2160Wh(45V, 48Ah)
LiFePO4, 675000mAh@3.2V	
Pure Sine Wave Output	2000W Continuous, 4000W Surge Max
AC Output	110V/220V 50Hz/60Hz
Operating Temp	-20°C-45°C
Charging Temp	0°C-40°C
Weight	25KG
Size	463*289*366mm
<b>INPUT</b>	
AC Input	1500W
Car Charge	12V/24V, 12A
Solar Charge	12-50V/12A, 400W max
<b>OUTPUT</b>	
1*Car Port	12V/8A, 100W max
Wireless Charge Port	YES
6*USB-A	5V/2.4A*4, QC 18W*2
2*USB-A(PD)	PD 45W*2, PD 100W*1

## Solid Draw-bar Adjustable Length



PHONE  
10w  
**194**  
hours

Drone  
40w  
**48.6**  
hours

Notebook  
58w  
**33**  
hours

Fan  
35w  
**55**  
hours

Mobile  
refrigerator  
45w  
**43**  
hours

Electric  
oven  
1000w  
**1.9**  
hours

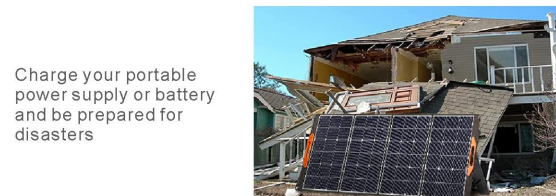
Electric  
kettle  
1600w  
**1.2**  
hours

Rice  
cooker  
820w  
**2.3**  
hours

Our portable solar panel offers high solar output, conversion efficiency rating, and a convenient folding design so it's ready to grab and go at anytime.



Charge with a portable power source for outdoor activities such as picnics



Charge your portable power supply or battery and be prepared for disasters



During an RV trip

# PORTABLE POWER STATION 1200W/1008Wh

Model: **LYM9**





## Specification

Capacity	1008Wh(22.4V, 45Ah)
LiFePO4, 315000mAh@3.2V	
Pure Sine Wave Output 1200W Continuous, 1800W Surge Max	
AC Output	110V/220V 50Hz/60Hz
Operating Temp	-10°C-40°C
Charging Temp	0°C-40°C
Weight	11KG
Size	290*220*230mm
<b>INPUT</b>	
DC Input	12V-36V, 200W
Car Charge	12V/8.3A, 100W max
Solar Charge	12-34V, 100W max
<b>OUTPUT</b>	
2*DC Pot	12V/8.3A, 100W max
Wireless Charge Port	NO
2*USB-A	5V/2.4A*1, QC 18W*1
2*USB-C(PD)	5V/2.4A*1, PD 65W*1



TV(100W)  
=4.8 hours



Laptop(50Wh)  
=9 recharges



Tablet(30Wh)  
=16 recharges



LED light(5W)  
=96.7 hours



Mini Fridge(60W)  
=8 hours



Phone(12Wh)  
=40recharges

Our portable solar panel offers high solar output, conversion efficiency rating, and a convenient folding design so it's ready to grab and go at anytime.



Charge with a portable power source for outdoor activities such as picnics

Charge your portable power supply or battery and be prepared for disasters



During an RV trip

(BLACK VERSION)

# 12.8 ENERGY STORAGE LIFEPO4 BATTERY

Model:

LY12100/LY12150/LY12200  
/LY12250/LY300/LY400





Model: LY12100/LY12150/LY12200/LY12250/LY300/LY400

### Product Parameter

Model	LY-12100	LY-12150	LY-12200	LY-12250	LY-12300	LY-12400
Nominal Voltage	12.8V					
Nominal capacity	100Ah/ 1280Wh	100Ah/ 1920Wh	100Ah/ 2560Wh	100Ah/ 3200Wh	100Ah/ 3840Wh	100Ah/ 5120Wh
Cell type	LiFePO4					
Composition	4S2P	4S2P	4S2P	4S2P	4S2P	4S2P
Charging cutoff voltage	14.6V					
Discharge Cut-off Voltage	10V					
Maximum continuous discharge current	100A	150A	150A	200A	200A	200A
Instantaneous discharge current	200A	300A	300A	400A	400A	400A
Disclaw	LCD					
Standard charging current	<50A	<75A	<75A	<100A	<100A	<100A
Standard discharge current	100A	150A	150A	200A	200A	200A
Charge suitable temperature	0°C~45°C					
Discharge suitable temperature	-20°C~65°C					
Battery pack size	330*170*225 mm	520*240*220 mm	520*240*220 mm	520*270*220 mm	520*270*220 mm	520*270*220 mm
Package size	400*250*305 mm	590*305*295 mm	590*305*295 mm	590*330*305 mm	590*330*305 mm	590*330*305 mm
Net weight of battery pack	11Kg	17Kg	18Kg	24Kg	25Kg	36Kg
Gross weight of battery pack	12Kg	18Kg	19Kg	25Kg	27Kg	38Kg
Communication method	Bluetooth RS485 RS232 CAN (can be added)					
Cooling method	Natural cooling					
Transport classification	UN38.3/MSDS/Sea/Air					
Battery protection function	Overcurrent, overvoltage, overcharging, overdischarge, short circuit, etc					

### Features



- Built-in LiFePO4 Battery cells. Large capacity, long cycle life, high safety, environmental protection



- Intelligent communication.
- Fashionable appearance.

### Application



RV/  
MOTORHOME

FISHING BOAT



SOLAR ENERGY  
SYSTEM

GOLF CART



### Cerification

UN38.3, MSDS, BIS, UL1973, CE, CB

(BLACK VERSION)

# 25.6V ENERGY STORAGE LIFEPO4 BATTERY

Model:

LY24100/LY24150/LY24200





## Features



- Built-in LiFePO4 Battery cells. Large capacity, long cycle life, high safety, environmental protection



- Intelligent communication.
- Fashionable appearance.

## Application



RV/  
MOTORHOME

FISHING BOAT



SOLAR ENERGY  
SYSTEM

GOLF CART



## Product Parameter

Model	LY-2460	LY-24100	LY-24150	LY-24200
Nominal Voltage	25.6V			
Nominal capacity	60Ah/1536Wh	100Ah/2560Wh	150Ah/3840Wh	200Ah/5120Wh
Cell type	LiFePO4			
Composition	8S2P	8S2P	8S2P	8S2P
Charging cutoff voltage	29.2V			
Discharge Cut-off Voltage	20V			
Maximum continuous discharge current	50A	100A	150A	150A
Instantaneous discharge current	100A	200A	300A	300A
Disclaw	LCD			
Standard charging current	<25A	<50A	<75A	<100A
Standard discharge current	50A	100A	150A	150A
Charge suitable temperature	0°C~45°C			
Discharge suitable temperature	-20°C~65°C			
Battery pack size	520*240*220mm	520*270*220mm	520*270*220mm	520*270*220mm
Package size	590*305*295mm	590*330*305mm	590*330*305mm	590*330*305mm
Net weight of battery pack	11Kg	17Kg	18Kg	24Kg
Gross weight of battery pack	15Kg	20Kg	28Kg	38Kg
Communication method	Bluetooth RS485 RS232 CAN (can be added)			
Cooling method	Natural cooling			
Transport classification	UN38.3/MSDS/Sea/Air			
Battery protection function	Overcurrent, overvoltage, overcharging, overdischarge, short circuit, etc			

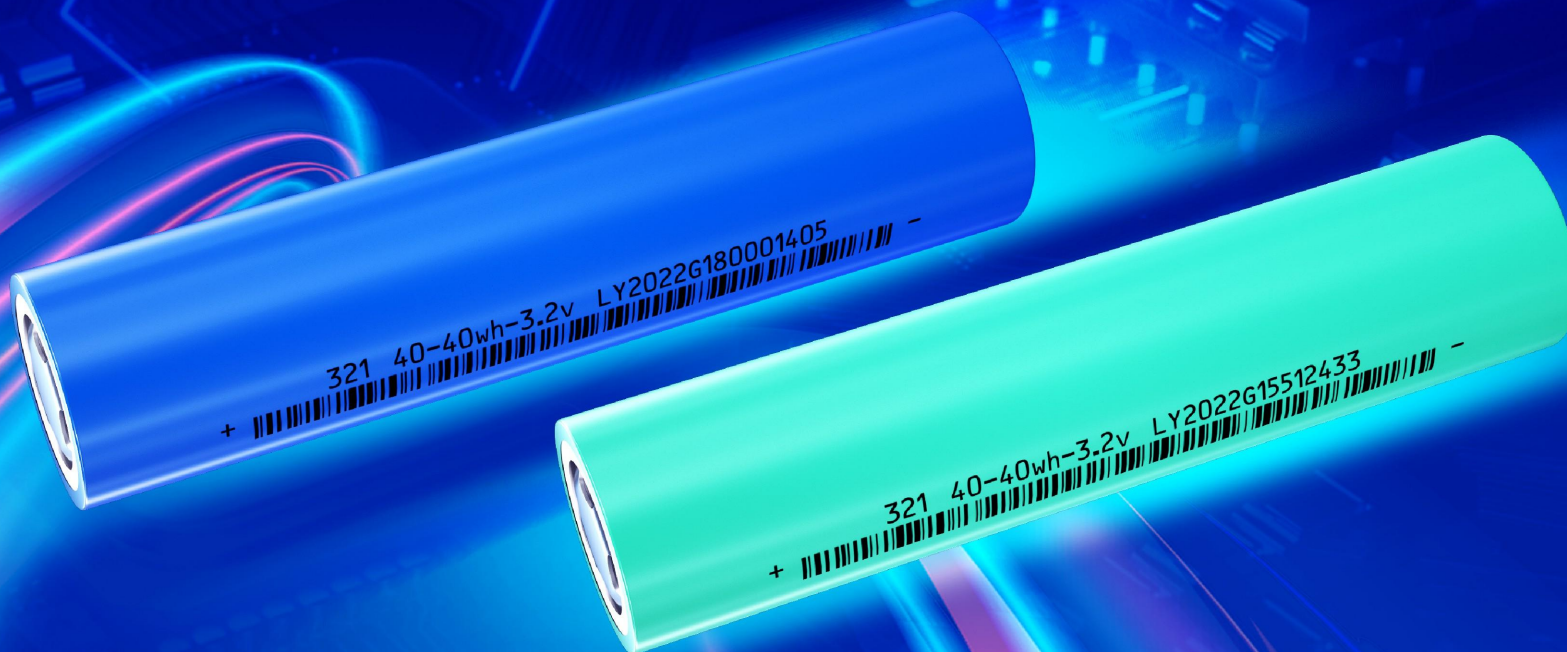
## Cerification

UN38.3, MSDS, BIS, UL1973, CE, CB

3.2V 12500/15000mAh

# LITHIUM-ION BATTERY

- Longer Cycle Life
- Superior Safety
- Lighter Weight
- High Efficient
- Quick Charge





## Product Parameter

Type	LY-32140	LY-32140
Nominal capacity	12500mAh	15000mAh
Minimum capacity	12000mAh	14500mAh
Nominal voltage	3.20V	3.20V
Internal resistance	Cell: $\leq 3\text{m}\Omega$	Cell: $\leq 3\text{m}\Omega$
Charge cut-off voltage(V)	3.65 V	3.65 V
Discharge cut-off voltage	2.0V	2.0V
Standard charge method	0.5C constant current constant voltage to 3.65V Cutoff current 0.05C	0.5C constant current constant voltage to 3.65V Cutoff current 0.05C
Standard discharge mode	0.5C constant current constant voltage to 2.0V Cutoff current 0.05C CC	0.5C constant current constant voltage to 2.0V Cutoff current 0.05C CC
Maximum continuous charge current	0.2C	0.2C
	0.5C	0.5C
	1.0C	1.0C
	0.5C	0.5C
Maximum continuous discharge current	3C	2C
Maximum pulse discharge current	6C (10S)	6C (10S)
Working temperature	0-55°C	0-55°C
	-20°C~+55°C	-20°C~+55°C
Storage temperature	-10°C / +45°C	-10°C / +45°C
	-10°C / +35°C	-10°C / +35°C
Battery weight	275±5g	300±5g
Energy density	145Wh/Kg	160Wh/Kg

## Features



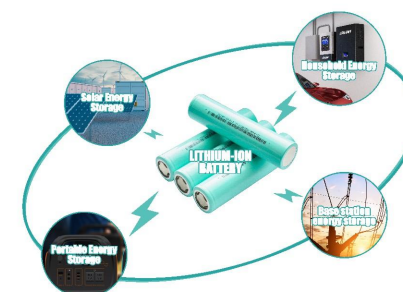
32140 battery cell innovation implements full lugs and large cells. The construction of a long cylinder with full lug manufacturing process (leaving lugs directly from the positive/negative electrode) greatly increases the current path and shortens the lug spacing, thus significantly increasing battery power and safety while also improving fast charging performance. The innovation of large cells reduces the cost of the battery, increasing the capacity density, reducing cells in the battery pack, making monitoring and status analysis of the battery simpler and the bms system is more worry-free.

Lithium iron phosphate is used in 32140 battery material to create the safest power battery.



## Application

1. Power station energy storage
2. Scenery energy storage
3. Base station energy storage
4. Home energy storage / outdoor power supply
5. Extensive use



## Cerification

UN38.3, MSDS, BIS, UL1973, CE, CB

# PORTABLE FODLING SOLAR PANEL

## OEM & ODM

Hot Selling Custom / Retail Portable Folding Solar  
Panel Styles OEM production for brand





## The Main Application Scope:

is to charge mobile phones, tablets, and energy storage power supplies, and accept customer customization.



Outdoor Office



Motor Homes Charging



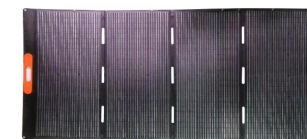
Outdoor leisure



Camping Charging



Yacht Party



### 30W

PM	30W
VOC	23.4V
ISC	16.1 A
VM	19.8 V
IM	1.51 A
Cells Types	单晶
Cells Efficiency	22%
Folding Size	285*195*35mm
Unfold Size	772*285*3mm
Encapsulating Material	ETFE+EVA+PCB+Fabric
Output Port	USB-A*2
Output Mode	USB-A: 5V3A

### 80/100W

PM	80W/100W
VOC	23.6V
ISC	80W: 4.26 A/100W:5.4A
VM	19.8 V
IM	80W:4.00A/100W: 5.05A
Cells Types	单晶
Cells Efficiency	22%
Folding Size	80W: 624*48035mm 100W: 56061535mm
Unfold Size	80W:960*6244mm 100W:1230*5604mm
Encapsulating Material	ETFE+EVA+PCB+Fabric
Output Port	USB-A*1 Type-C*1
Output Mode	USB-A:QC3.0 Type-c: PD60W

### 160/200W

PM	160W/200W
VOC	23.6V
ISC	160W:8.6A/200W:10.75A
VM	19.8 V
IM	160W: 8.1 A/200W: 10.1 A
Cells Types	单晶
Cells Efficiency	22%
Folding Size	80W: 624*48035mm 100W: 56061535mm
Unfold Size	80W:960*6244mm 100W:1230*5604mm
Encapsulating Material	ETFE+EVA+PCB+Fabric
Output Port	USB-A*1 USB-C*1
Output Mode	USB-A:QC3.0 Type-c:PD60W

### 400W

PM	400W
VOC	47.2V
ISC	10.75 A
VM	39.6V
IM	10.1 A
Cells Types	单晶
Cells Efficiency	22%
Folding Size	1074*631*45mm
Unfold Size	2370*1074*4mm
Encapsulating Material	ETFE+EVA+PCB+Fabric
Output Port	Cable Length 1.5M with M4 Connector
Output Mode	M4 Connector:DC36V